



## FABRICS

### SCOOP HAND WOVEN STRIPE

Color: BREEZE

SKU No: 80811

#### What makes it special

Ethically handwoven in Guatemala, breeze-colored Scoop Stripe is a versatile cotton fabric that infuses a regular repeat with character. Designed by dynamic London-based company A Rum Fellow, the artisanal nature of this textile has a warmth and tactility that sets it apart from machine-made goods.

#### Product Details

#### SIZING & MEASUREMENT

Horizontal Repeat	11 1/4" (29CM)
Item Width	47 1/5" (120CM)
Match	STRAIGHT

#### CONTENT & FINISH

Abrasion	MARTINDALE 25,000
Content	100% Hand Woven
Flame Test	FINISH REQ FOR CAL-117

#### OTHER DETAILS

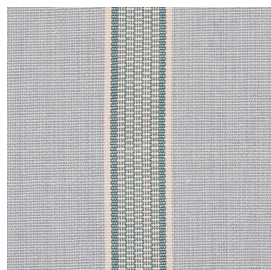
Country of Finish	GUATEMALA
Country of Origin	GUATEMALA
Collection	A RUM FELLOW HAND WOVENS

Have a question?

Give us a call at **1 800-523-1200** or email us at [info@fsco.com](mailto:info@fsco.com)

Need Hospitality Grade?

Call us at **646-701-5239** or email us at [Hospitality@fsco.com](mailto:Hospitality@fsco.com)



SCHUMACHER